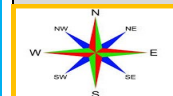


# Geography: Should Manchester be the next capital city of England?

## What should I already know?

I named and located the four countries and capital cities of the United Kingdom and its surrounding seas and used world maps, atlases and globes to identify the United Kingdom, as well as the countries, continents and oceans studied. In KS2 so far, I have learned to name and locate countries and cities, using a world map and atlas to find them. I know the key features of a map consist of longitude to latitude lines, I can find the position of the Equator, Northern Hemisphere and Southern Hemisphere and can find the countries that are closest to the Equator. I can locate the geographical regions of Britain, North and South America through landscapes, human and physical geography. I can compare and contrast land use during different periods within British History. I have carried out studies of routes and uses of rivers, features of a river, mountain ranges and features of volcanoes and earthquakes. I know the eight points on a compass and have also explored using four figure grid references. I applied this knowledge to orienteering using maps and symbols. I know about rivers, basins, oceans and seas that surround North and South America.

Orienteering	Use of navigational skills using a map and compass to navigate from point to point.
Compass	instrument used for navigation and orientation that shows direction
Coordinates	The quantities of latitude and longitude which position of a point on the surface of the Earth
Grid reference	A grid reference a location on a map
Field work	is the process of observing and collecting data about people, cultures, and natural environments
Symbols	are small pictures that stand for different features on a map
Borough	a town, or a division a large town
Landlocked	surrounded by land and having no coast
Key	A key is a list of symbols that appear on the map
Ordnance survey	the national mapping agency for Great Britain
Route	a particular way or direction between places
Aerial	existing, happening, or operating in the air

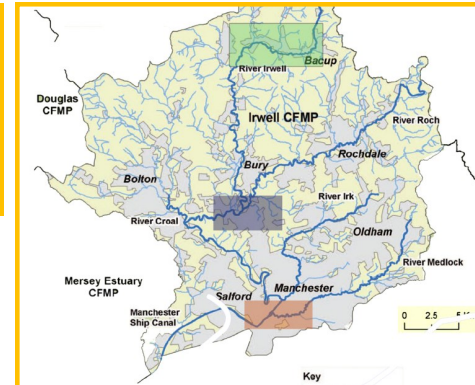


## Which areas belong to Greater Manchester?

- Covers an area of 1,276 km
- Population of 2.8 million
- Third largest after Greater London and West Midlands.
- 10 metropolitan boroughs

## Rivers that run through Manchester

- River Irk
- Medlock
- Irwell



## OS Map Symbols



## Tourist attractions in Manchester?

Castlefield, Bridgewater Canal, Bridgewater Hall, MOSI, Imperial War Museum, Manchester Cathedral, National Football Museum, Chetham's Library, Ryland's Library, and Manchester Art Gallery.